

Surface Enhancement

The headliner for April's meeting was COWs' own Andi Wolfe, demonstrating surface enhancement. Here are some of her resources.

Basics of Surface Enhancement **Supplies and Tools Used in Demonstration**

- NSK Z500 micromotor tool
- Burnmaster woodburner
- Detail Master 10A, 6A, 7B pens
- Razortip circle stampers
- Razortip writing tips
- Dremel engraving tool
- Freedom variable speed controller
- Butane microtorch
- Variety of carving burrs

Resources

- www.bursforcarving.com
- www.treelineusa.com
- www.woodcarverssupply.com

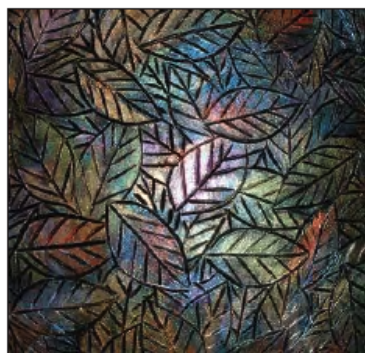
Methods

Grain compression

- You won't hide flaws!
- Prep the surface well.

Texturing with carving tool

- Repetitive motifs work well
- Try different burrs to see what patterns can be made.
- Combine texturing with scorching.



Pyrography techniques

- Condition and sharpen tips.
- Adjust temperature for desired depth of burn.
- Practice on flat boards or scrap bowls.
- Make a sampler to try different patterns.
- Wash burn residue with 91% isopropanol.

Finishing

- Penetrating oil varnish

Coloring & Painting

Supplies Used in Demonstration

- 91% isopropanol (rubbing alcohol)
- Prismacolor art markers
- Acrylic paints
 - Lumiere Metallics
 - Liquitex Interference
 - Palmer Prism Acrylics
 - Golden Black Gesso
- Nylon bristle paint brushes

Resources

- www.DickBlick.com

Methods

(both techniques)

- Prepare surface (1200 grit sandpaper)
- Clean residues with 91% isopropanol



Prismacolor techniques

- Use alcohol as solvent for prismacolor blending.
- Make sure paint brush is dry before picking up dye.
- Layer colors from lightest to darkest.
- Blend colors as they are applied.
- Don't over-use the alcohol.
- Oil finish, followed by Krylon Fixatif, then Krylon UV resistant spray.

Acrylic techniques

- Seal surface with black gesso.
- Don't overload the paint brush.
- Layer colors from darkest to lightest.
- Oil finish after paint is dry.

