

Feb  
2009



# MANY GOOD TURNERS

Chuck Kemp, President  
ckemp001@columbus.rr.com  
614.771.7861

Bruce Kerns, Vice President  
bkerns@insight.rr.com  
614.920.1184

Nancy Kerns, Secretary  
nancyk696@yahoo.com  
614.920.1184

Craig Wright, Treasurer  
woodturnerdude@gmail.com  
614.638.3819

Submit newsletter articles  
by the 25th of the month  
to Sharon Bierman,  
614.899.3755, newsletter@  
centralohiowoodturners.org



An Affiliate Chapter of the  
American Association of Woodturners  
woodturner.org

## Robert Sorby

### Chris Pouncy

#### Special Event - February 26

**10a to 3p** - Open to the Public - Join Chris Pouncy of Robert Sorby, Ltd. for a day of informal demos. This will be a fun, relaxing hands-on environment where everyone can ask questions and demo many of the new Sorby products as well as standby favorites.

**4p to 7p** - For COW members and prospective members - At 4:00p, adjourn to the Classroom for an indepth tool and technique



workshop. No fee.

During the event, take advantage of special pricing on the complete Sorby product line, including a 25% discount on many of the most popular Sorby tools.

#### WoodWerks Supply

1181 Claycraft Road - Columbus  
614.575.2400  
woodwerks.com



# Insurance Coverage for AAW Members

After many years of searching, the AAW can now offer most of our U.S. resident members and their families medical insurance policies at very competitive rates through Association Health Programs (AHP) from Overland Park KS.

AHP administers the health insurance needs of more than 180 national associations, representing 2.5 million people. This huge block of buyers allows AHP to negotiate the lowest premiums available. On average, AHP expects to save AAW members substantial amounts on premiums. This may be the biggest benefit of your AAW membership.

The AAW talked with many associations that already do business with AHP, and without exception they were all delighted with the service and premiums. Complaints were minimal and always handled promptly to members' satisfaction.

AHP offers a 100% guarantee. If you are insurable, they can give you the lowest costs, compared to any other source. If you have any existing medical conditions, AHP guarantees that their liberal underwriting will allow you to pay less. They further guarantee that upon annual renewal, they will obtain for you the lowest rates on health insurance and analyze your coverage to keep premiums in line with alternative insurance suppliers.

AHP will place our AAW members and their families in with a large block of buyers in each state, with members from all the other associations that they represent. They will only use "A"

## CALENDAR

### • February Meeting - Feb 10 •

7p - 1100 Kinnear Road - Columbus

#### Mentoring on Steroids

This is your chance to touch the tools and ask questions of the experts. For the adventurous, Tom Clark will demonstrate his hollowing technique and show how he creates those beautiful hollow form vases. Jim Burrowes and Freddy Dutton will demonstrate how to use the bowl gouge, spindle gouge, and skew to achieve the cuts and shapes you want. This is a **hands-on** activity, so prepare your questions and come ready to make shavings.

**President's Challenge** - Valentine's Special for Someone Special.

### • Mentoring - Feb 28 •

#### 10a-1p - Woodcraft, 1077 Bethel Road, Columbus

Turn a lidded box. Learn why a bowl flies off the lathe when you try to hollow the center. Just watch the chips fly. Whatever your interest, Club members will help with questions and techniques. Contact Paul Courtright (740.363.6042, courtright.23@osu.edu) with your interests.

At January's mentoring, you missed Floyd Anstaett turning some tops, a stir stick, and a small lidded box. Chuck Kemp turned a natural edge bowl and a goblet.

Floyd, Chuck, and Bruce Kerns demo'd shaping techniques.

rated insurers such as Humana, Blue Cross, Aetna, United Health Care, Healthnet, or Assurant. In all of these, policy rates and renewals will be based on age and not your future medical conditions. Once a policy is issued, our members cannot be cancelled because of any change in your medical condition.

In general, you can expect \$5 to \$8 million of lifetime maximum benefits per person, comprehensive full-coverage major medical insurance, unlimited routine care, unlimited prescriptions, PPO options or the ability to see any doctor or hospital of your choice, and coverage that is good anywhere in the United States.

AHP also can offer group policies for any business of three or more employees or officers. They can also provide policies to cover Health Savings Accounts, Medicare Supplements, and Medicare Part D coverage, dental, disability income, critical illness, and international

travel insurance. Through their large-block purchasing power, AHP can also provide the lowest premium rates on life insurance for term, whole life, second to die, key man, or universal life.

If one of the insurance policies you need is long-term care insurance, through AHP you can save a substantial discount off of premiums that provide for home care, assisted living care, adult living care, and nursing home care. AHP offers policies that provide for 100% coverage for any services that you may need in any care. Insurance companies providing this coverage include MetLife, John Hancock, Principal, Guardian, Medical Mutual, Physicians Mutual, and Genworth.

AHP can also help save you on the costs of premiums for your auto and home insurance.

Read the FAQs and learn more at <http://www.woodturner.org/org/mbrship/health.htm>. •

# Show & Tell - Jan 2009

View all entries and information at <http://www.donleman.com/cows/>

Phil Taylor



Ron Fisher



Freddy Dutton



Scott Hogsten



Walt Betley



Andi Wolfe



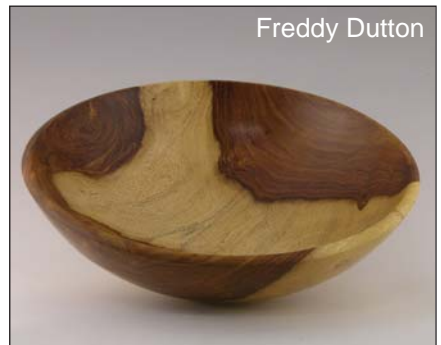
Andi Wolfe



Ron Fisher



Freddy Dutton



Bruce Kerns



Nelson Meyer



Chuck Kemp



# Presidential Ramblings

By Chuck Kemp, President

Sorry I missed the January meeting. I forced myself to spend two weeks in St. Augustine and play golf four times. St. Augustine is the oldest city in the United States and has many interesting things to see. There is a restored working lighthouse and an old Spanish fort, the Castillo de San Marcos.



Vessel Turning), and Stuart Batty (Bowl Turning with Just a Gouge and Very Tall Thin Goblet).

I picked up a piece of Norfolk Island Pine and should have it ready for our Show & Tell in a couple of months. I was very interested in how Stuart Batty finished the base of his tall goblet, and I will try that technique soon.

The President's Challenge for February is **Valentine's**

**Special – Something for Someone Special.** I recently bought a book by Hilary Bowen, "Woodturning Jewellery" (note the English spelling) and have been making rings from ebony and bracelets from cocobolo. I plan to make some earrings for the February President's Challenge.

It is time to think about **open shops** in the summer.

If you are interested in hosting an open shop, please contact Bruce Kerns (bkerns@insight.rr.com, 614.920.1184) or me (ckemp001@columbus.



I may have missed our meeting, which I hear was excellent, but I did get my monthly woodturning fix by attending the Florida Woodturning Symposium in Eustis FL. They had eight outstanding demonstrators. I attend demos by Robert Morris (Hollow Sphere), Dave Barriger (ABCs of Natural Edge Bowls), Jimmy Clewes (End Grain Vase and Long-Stemmed Tapered Goblet), John Jordan (Hollow

rr.com, 614.771.7861). There also

has been some talk about a summer picnic in connection with one of the open shops.

Hope you are staying warm. I am ready for spring or another trip to Florida. •

## Get Well

Ruth Baumgardner, co-owner of Woodcraft, fell on the ice mid-January during the severe storm and will have quite an extended recovery. You may send your get well wishes to Woodcraft (1077 Bethel Road, Columbus OH 43220, 614.273.0488). Our best to her and Jim. •

## WANTED

Vacuum chuck system, complete with pump, regulator, and any attachments to get started. I have General lathes, both the maxi and 25-650, and will be chucking bowls, platters, hollow forms, and small objects like eggs. Dennis DeVendra, dpdevendra@columbus.rr.com, 614.405.2066.

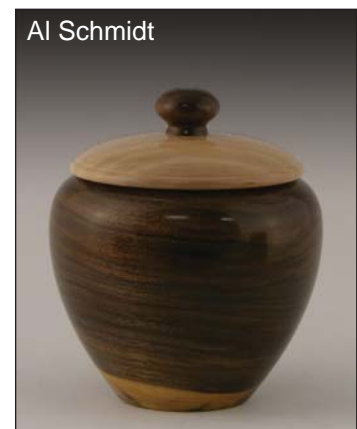
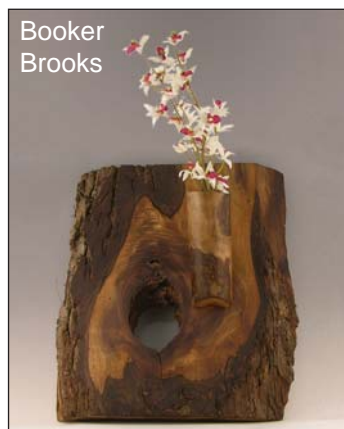
## Treasurer's Report

By Craig Wright, Treasurer

Starting Balance (12-31-08)	\$4,805.58
Total Income	965.00
Total Expenses	189.40
Ending Balance (1-27-09)	\$5,581.18

# Show & Tell - Jan 2009

View all entries and information at <http://www.donleman.com/cows/>



# Woodturning on PBS - TV

**Tim Yoder - Woodturning Workshop**

<http://www.woodturner.org/resources/pbs.htm>

Learn to turn a block of wood into beautiful pieces with host Tim Yoder in the Woodturning Workshop. Season #3 begins March 2009.

Not receiving the Woodturning Workshop through your cable or satellite provider? Viewers are a powerful voice when it comes to the programming decisions made by your local PBS station. Here are some suggestions on how you can convince your local PBS station to carry Woodturning Workshop.

**Call your local PBS station.** Call the programming department of your local PBS station and request that they carry WTW. Remind them that season #3 is feeding via NETA (National Educational Television Authority) beginning in March 2009. If your station has never carried WTW, let them know that season #1 and #2 comprise 39 episodes, and that NETA will distribute those seasons upon request. To find your local PBS station, visit [http://www.pbs.org/stationfinder/stationfinder\\_relocalize.html](http://www.pbs.org/stationfinder/stationfinder_relocalize.html).

**Contact PBS Create TV.** Create TV is public broadcasting's answer to HGTV and carried WTW season #1. They have plans to carry WTW again but not until 2010. To see WTW in your area now, contact the PBS Create TV programmers and ask them to place WTW in their schedules for 2009. Visit <http://www.createtv.com/CreateProgram.nsf/vProgramsByNola/WDWK>, to

fill out an online form requesting that WTW be added to the Create Network lineup.

WTW is produced by the small public television station, RSU Public TV. Visit <http://www.rsublictv.org/spotlightswtw.htm> to view links to all the season #1 and #2 episodes. If you wish, you will be able to purchase DVDs of your favorite episodes through the RSU Public TV site. You will also find links to resources for many of the projects. This web page is a "work in progress" because the station is small. The webmaster is - who else - Tim Yoder. Use Internet Explorer for best results. Tim is working on compatibility issues



with other browsers.

Disclaimer: "RSU Public TV produces Woodturning Workshop because we believe in lifelong learning. All of the money from contributions, DVD sales, and underwriters goes directly into the production costs. None of the money goes to station salaries or equipment costs." •

## COW Lending Library

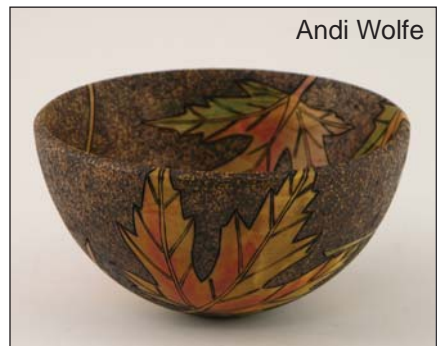
This list is current as of Jan 13. All items are due back at the next meeting. If you are unable to attend the next meeting, mail the item(s) to Nancy Kerns, 696 North Starr Drive, Pickerington OH 43147, or make arrangements for their return ([nancyk696@yahoo.com](mailto:nancyk696@yahoo.com), 614.920.1184).

1	Hollow Turning - John Jordan	1-13-09 Rex Landis
2	Turning Wood - Richard Raffan	
2a	Turning Projects - Richard Raffan	
3	First Steps in Woodturning, a Lesson with Chris Scott	
4	Techniques from the 1995 AAW Symposium	
5	Skill Building - Mark St. Ledger	
6	Instant Gallery 1996 AAW Symposium	
7	Turning Projects from Scrap - Robert Rosand	
8	Techniques and Projects - Bonnie Klein	1-31-09 Mike Coman
9	Fundamentals of Sharpening - Lacer/Klein - copy 1	11-11-08 Paul Bahm
10	Instant Gallery Critique - 2003 AAW Symposium	
11	Bowl Turning - John Jordan	
12	The Skew Chisel - Alan Lacer - copy 2	1-8-08 Jim Bender
13	Techniques from the 2003 AAW Symposium Vol 1	1-13-09 Don Emmerling
14	Techniques from the 2003 AAW Symposium Vol 2	1-13-09 Don Emmerling
15	The AAW: Who We Are - What We Have to Offer	
17	Scenes from the 1994 AAW Symposium	
18	Instant Gallery Critique - 1996 AAW Symposium	
20	Woodturning Techniques - Mike Darlow	1-8-08 Dean Thomsic
21	Basic Pen Techniques - Bill Baumbeck	
22	Ring Turning at Striezelmarkt - Harold Lorenz	
23	Ellsworth Sig Gouge	
24	Two Ways to Make a Bowl - Stuart Batty & Mike Mahoney	2-20-07 Mike Sarnovsky
25	The Skew Chisel - Alan Lacer	4-10-08 James Snyder
26	Woodturning, Getting Started Right - Alan Lacer	5-13-08 Tim Addington
27	The Son of Skew - Alan Lacer	1-8-08 Jim Bender
28	Fundamentals of Sharpening - Lacer/Klein - copy 2	11-11-08 Chris Cannon
29	Turning Unusual Materials - Bonnie Klein	
30	Turned Boxes with Threaded Lids - Bonnie Klein	
31	AAW Journal 1986-1993 copy 1	
32	AAW Journal 1994-2001 copy 1	
33	AAW Journal 1986-1993 copy 2	
34	AAW Journal 1994-2001 copy 2	
35	Thin Wall Turning - Binh Pho	11-11-08 Joel Bossley

36	Surface Design on the Thin Wall Turning - Binh Pho	2-20-07 Mike Sarnovsky
37	American Art Collector	
38a,b,c	Selecting a Burning System - 3 copies	
39	Nick Cook Articles	
40	Turning Boxes with Threaded Lids – Bonnie Klein	9-9-08 Nelson Meyer
41	Turning Boxes - Richard Raffan	
42a,b	Multi-axis Candlesticks – Mark Sfirri	
43	Turning Unusual Materials – Bonnie Klein	
44	Turnaround – Jimmy Clewes	
45	Beyond Wood - The Fine Art of Turned and Sculpted Wood	1-13-09 Mark Damron
46	Turning Boxes & Other Projects – Bonnie Klein	
47	Turning Bowls & Other Projects – Bonnie Klein	
48	Techniques & Projects – Bonnie Klein	9-9-08 Tona Musgrave
49A	Turning It On: Vol 1 – Jimmy Clewes	1-13-09 Devon Palmer
49B	Turning It On: Vol 2 – Jimmy Clewes	9-9-08 Mark Damron
49C	Turning It On: Vol 3 – Jimmy Clewes	
50	Bandsaw - Guide to Set-up and Operation	
51	Jointer & Planer - Guide to Set-up and Operation	
52	Lathe - Guide to Set-up and Operation	1-13-09 Jim Meyers
53	Shaper - Guide to Set-up and Operation	
54	Tablesaw - Guide to Set-up and Operation	1-13-09 Devon Palmer
55	Gilding & Chemical Patinations	1-13-09 Booker Brooks
56A	Turning Pens with Kip & Rex, Video 1 - Basics & Beyond	5-13-08 Lonnie Minton
56B	Turning Pens with Kip & Rex, Video 2 - More Pens Plus	
57	Turning Wood - Richard Raffan	1-13-09 Jim Myers
58	Turning Projects - Richard Raffan	
59	Turning Boxes - Richard Raffan	
60	Segmented Patterns - Curt Theobald	1-8-08 Dean Thomsic
61	Intro to Segmented Turning - Curt Theobald	9-9-08 Grant Davis
62	The Skew Chisel - Allan Batty	11-11-08 Mark McCune
63	Starting Your Creative Engine - Frank Sudol	5-13-08 Jim Brown
64	Hollow Forms and Urns: A Workshop - Mike Mahoney	11-11-08 Joel Bossley
65	Hollow Forms the Easy Way - Lyle Jameson	5-13-08 Jim Brown
66	Hand Thread Chasing - Allan Batty	
67	Wood turning - Aesthetics & Properties of Wood - John Jordan	
68	Turn It Up, Vol 1, Jimmy Clewes	9-9-08 Nelson Meyer
69	Turn It Up, Vol 2, Jimmy Clewes	1-13-09 Bob Ellinger
70	Turn It Up, Vol 3, Jimmy Clewes	9-9-08 Booker Brooks
71a	Wood Turning Projects, Vol 1, with Rex and Kip	
71b	Wood Turning Projects, Vol 2, with Rex and Kip	1-13-09 Jack Hock
72	Bowl Basics: A Workshop - Mike Mahoney	5-13-08 Lonnie Minton
73	Turned Boxes - Ray Key (The Basic Box)	
74	Turned Boxes - Ray Key (The Finial Box)	1-8-08 Booker Brooks
75	Turned Boxes - Ray Key (The Capsule Box)	3-11-08 Steven Parker
76	Basic Pen Turning - Bill Baumbeck	
77	Finishing Secrets - Russ Fairfield	9-9-08 Booker Brooks
78	Turned Bowls Made Easy - Bill Grumbine	1-13-09 Bruce Daily
79	Beyond the Basic Bowl - Bill Grumbine	1-13-09 Mike West
80	Adapting Metal Cutting Techniques to Rose Engine Machines	
81	Woodturning - Vol 1	
82	Woodturning - Vol 2	11-11-08 David Lewis
83	Wood Turning Projects, Vol 1, Nick Cooke	
84	Wood Turning Projects, Vol 2, Nick Cooke	
86	Fancy Christmas Ornaments - Ron Brown - Part I	1-13-09 Phil Taylor
87	Fancy Christmas Ornaments - Ron Brown - Part II	1-13-09 Phil Taylor



Kirk DeHeer



Andi Wolfe



Tom Clark



Andi Wolfe



Tom Clark



Jim Burrowes

## FIRST CLASS MAIL

c/o Craig Wright  
7634 Whitneyway Dr.  
Worthington, OH 43085



Next Meeting • Tuesday, February 10, 2009 • See Calender item on page 2 for details.

### SPECIAL EVENTS

**SawStop** - The hotdog survives during the SawStop demos on **Saturday, February 7, from 1p to 1:30p**. See it for yourself during this monthly demonstration.



Woodcraft's **annual spring sale** will be **February 28** with 10% off most power tools and other surprise discounts.

Mark your calendars for the **3rd Annual Swap & Shop Day on June 20**. Clean out your shop and bring your unneeded equipment to sell or swap with other woodworkers.

### WOODCRAFT

1077 Bethel Road • Columbus • 614.273.0488  
woodcraft.com

### SPECIAL EVENTS

#### Festool Days

Join Larry Smith, sales staff, and product managers from the Lebanon IN corporate office on **Saturday, February 28, from 9a to 1p**, showcasing some of the most advanced woodworking tools available today, the Festool System.

We'll have live demos of the new Kapex Miter Saw, the famous Domino, and incredible integrated dust and power management found in the complete Festool system.



### WOODWERKS SUPPLY

1181 Claycraft Road • Columbus • 614.575.2400  
woodwerks.com

Next Meeting • Tuesday, February 10, 2009 • See Calender item on page 2 for details.